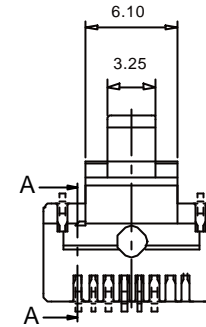
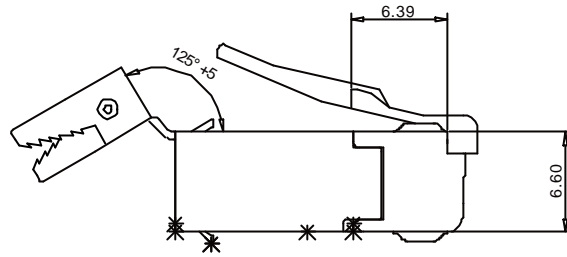
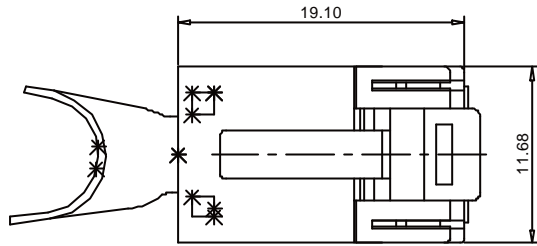
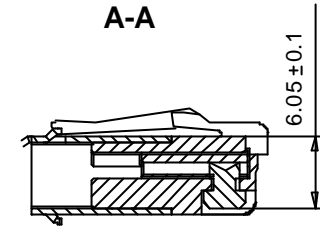


THE INFORMATION CONTAINED IN THIS DRAWING IS THE SOLE PROPERTY OF YAMAICHI ELECTRONICS DEUTSCHLAND GmbH. ANY REPRODUCTION IN PART OR WHOLE WITHOUT THE WRITTEN PERMISSION OF YAMAICHI ELECTRONICS DEUTSCHLAND GmbH IS PROHIBITED.

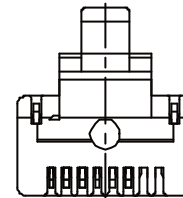
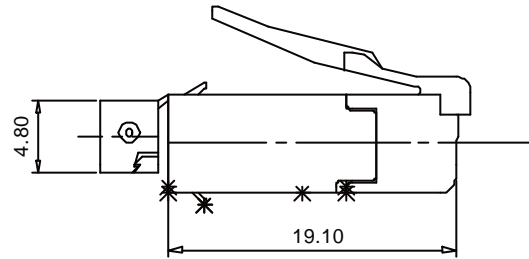
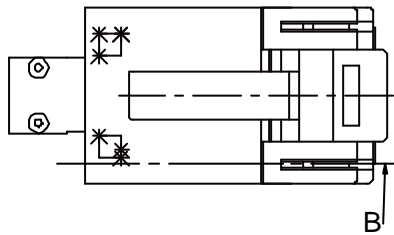
Assembly before crimping



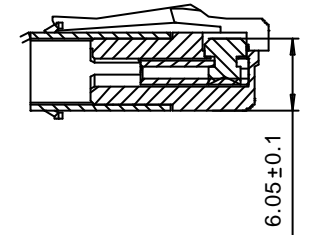
A-A



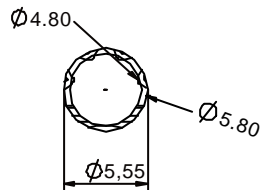
Assembly after crimping



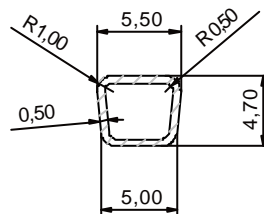
B-B



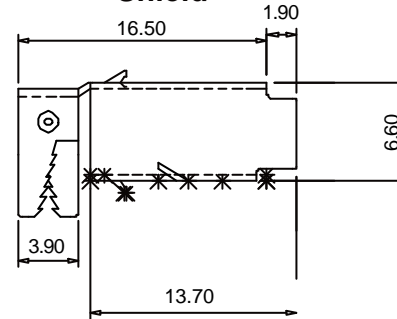
Shield after round crimping



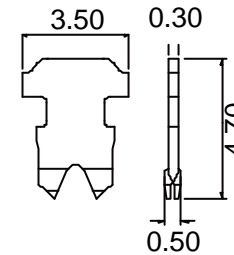
After square crimping



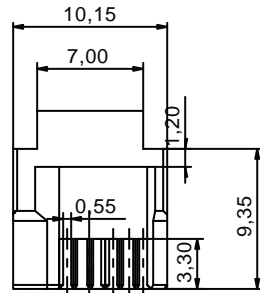
Shield



Contacts for stranded wire



Insert



Material :
 Housing material : PBT
 Durability : 2000 mating cycles
 Contact blade : phosphor Bronze
 High strenght copper alloy
 100 microinches nickel under plated &
 gold selected 30 microinches

UNLESS OTHERWISE SPECIFIED:
 DIMENSIONS ARE IN MILLIMETERS
 TOLERANCES: ±0.3
 ALL UNDIMENSIONED EDGES
 HAVE A RADIUS OF: 0.2mm

REV.	REVISION DESCRIPTION	INITIALS	REV. DATE



NOTES:

DO NOT SCALE DRAWING

CLASSIFICATION: Y-ConPlug-31 /RJ 45 plus cable plug
 8(6)+2 with power contacts

DESIGN	NAME	DATE
TN	BH	03.07.2003
DRAWN	BH	08.09.2003

TITLE: Customer-drawing

CHECKED	G.A.	APPROVED
	WM	HK

DWG NO.: Customer-P(090)A83

REVISION: 0

ANGLE PROJECTION: First
 WEIGHT:

SCALE: 3:1 SHEET 1 OF 1 A3 - ASSEMBLY

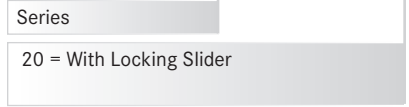
08.09.2003

Y-ConIP20Lock-20



PART NUMBER

Y-ConIP20Lock - **



SERIES Y-ConIP20Lock

RoHS2011/65/EU

DESCRIPTION

IP20 lock 180° strain relief with vibration resistant locking clips. Also available with additional locking slider for increased mechanical retention. For use with all Y-Con plugs

IP20-Zugentlastung mit vibrationsstabilen Rasthaken.
Auch mit zusätzlichem Schiebeverschluss für verbesserte mechanische Rückhaltekraft verfügbar. Für den Einsatz mit allen Y-Con Kabelsteckern

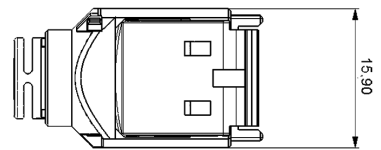
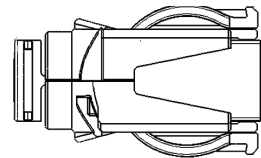
MATERIAL

Colour: PA66
Farbe: Y-ConIP20Lock-20 (Black & White)

SPECIFICATIONS -20°C ~ +120°C

Operating Temp.
Betriebstemp.

Y-ConIP20Lock OUTLINE DIMENSIONS



Y-ConIP20Lock-20

Part Number	Type
Y-ConIP20Lock-20	With additional locking slider