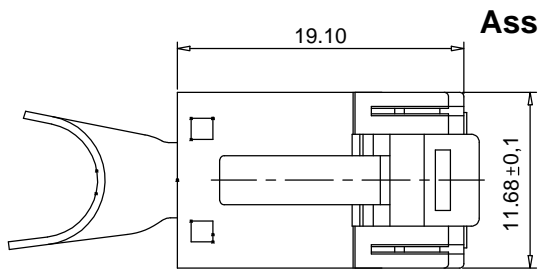
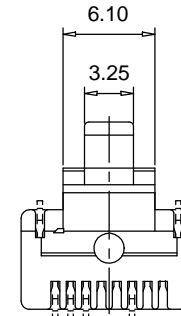
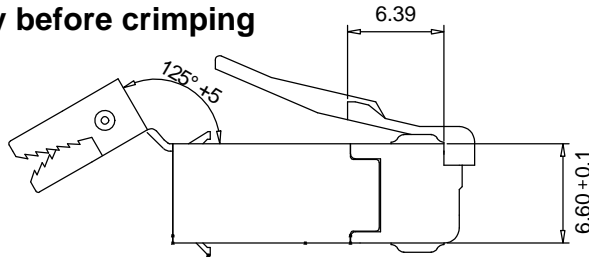


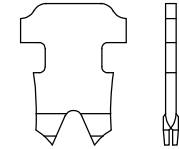
THE INFORMATION CONTAINED IN THIS DRAWING IS THE SOLE PROPERTY OF YAMAICHI ELECTRONICS DEUTSCHLAND GmbH. ANY REPRODUCTION IN PART OR WHOLE WITHOUT THE WRITTEN PERMISSION OF YAMAICHI ELECTRONICS DEUTSCHLAND GmbH IS PROHIBITED.



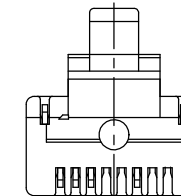
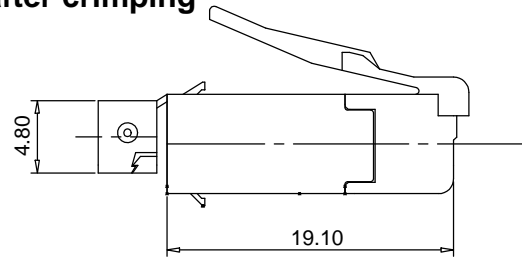
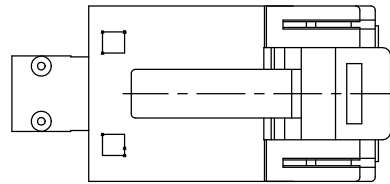
Assembly before crimping



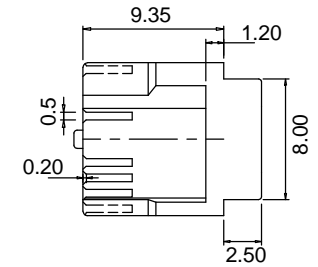
Contacts for stranded wire



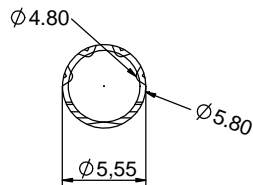
Assembly after crimping



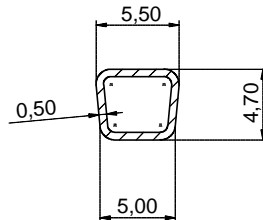
INSERT



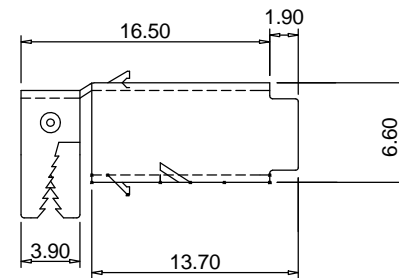
Shield after round crimping



After square crimping



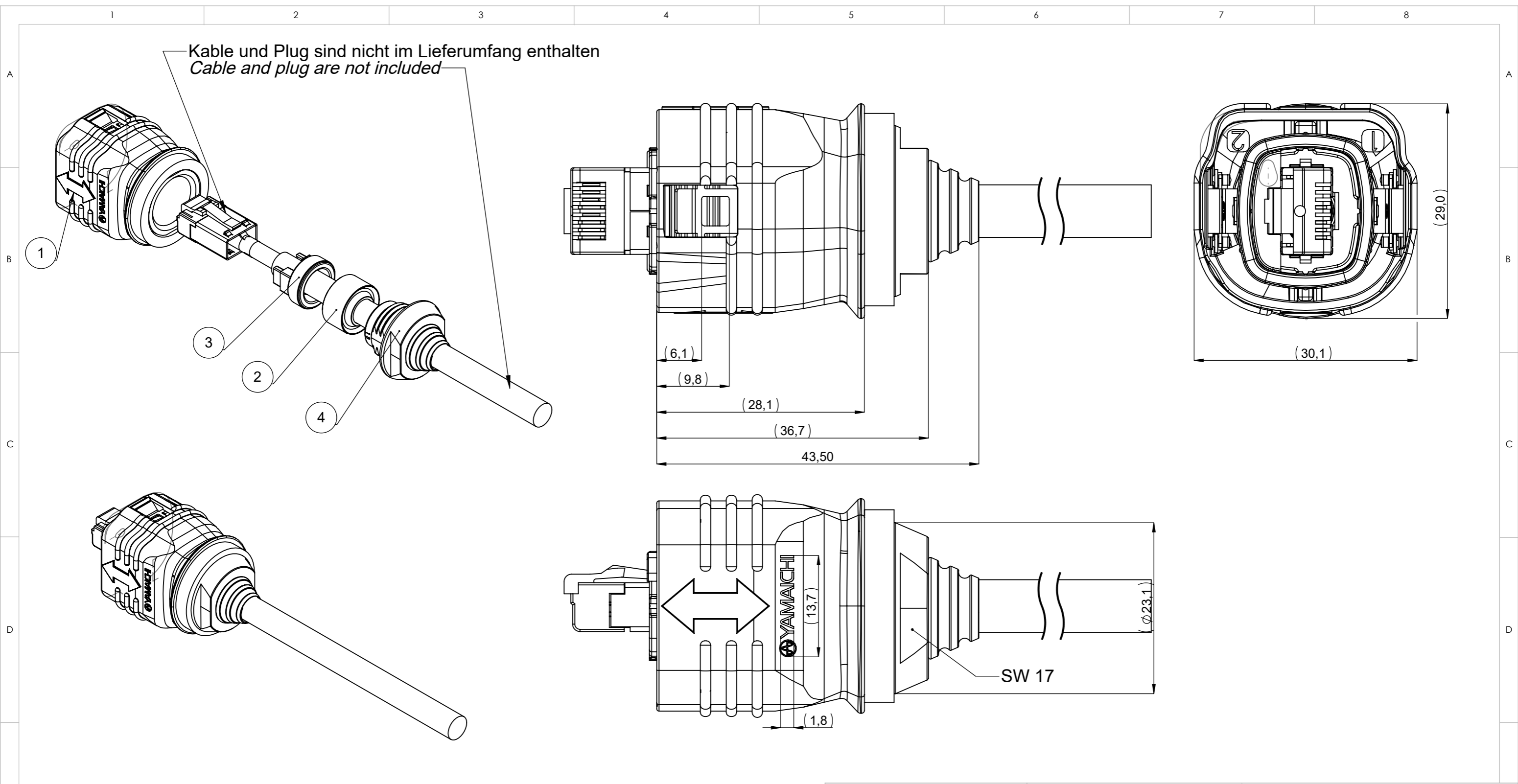
Shield



Material :
 Housing material : PBT
 Durability : 2000 mating cycles
 Contact blade : phosphor Bronze
 High strenght copper alloy
 100 microinches nickel under plated &
 gold selected 30 microinches

UNLESS OTHERWISE SPECIFIED: DIMENSIONS ARE IN MILLIMETERS TOLERANCES: ±0.3		REV.	REVISION DESCRIPTION	INITIALS	REV. DATE
		5			
		4			
		3			
		2			
		1			
		DO NOT SCALE DRAWING		CLASSIFICATION:	
NOTES:		NAME	DATE	Customer-drawing	
		DESIGN		TITLE: Y-CON Plug-21 / 8(4)+2 Ethernet RJ45plus with power contacts	
		DRAWN			
		CHECKED			
ANGLE PROJECTION: First		Q.A.		DWG NO.: Customer-P(090)A11	
		APPROVED		REV. ORIGIN	REV.
				B	-





Pos.	Description	Draw No	Art No	QTY.
1	Y-CONCOVER-40-PP-Y-BG1	P3021A36	82-00809	1
2	Y-CONCOVER-40-PP-SL	P3021P17	82-00826	1
3	Y-CONCOVER-40-PP-PLG-ST	P3021P56	82-00824	1
4	Y-CONCOVER-40-PP-BG2	P3021A01	82-00810	1

Yamaichi acts with all markings of the product exclusively on behalf of the customer as service provider and not as distributor. Yamaichi is not aware of the customer's end use/application. The customer indemnifies Yamaichi from any liability towards third parties in connection with the marking - with the exception of the legal exclusions of liability according to § 309 No. 7 BGB.

100%	Critical Dimensions to be inspected 100%.	CONFIDENTIAL	Customer Drawing				
	Critical Dimensions.		RoHS compliant acc. to directive 2011/65/EU				
<SPC>	Critical Dimensions. To determine Cmk & Cpk.		Specification/Drawing subject to alteration without prior notice.				
UNLESS OTHERWISE SPECIFIED : DIMENSIONS ARE IN MILLIMETERS		The information contained in this drawing is the sole property of YAMAICHI ELECTRONICS DEUTSCHLAND GMBH. Any reproduction in part or whole without the written permission of YAMAICHI ELECTRONICS DEUTSCHLAND GMBH is prohibited.					
TOLERANCES:		△	REVISION DESCRIPTION	ID	REV. DATE		
ORDER / ARTICLE NO. 82-00806		002	Temp. range added	M161	09.06.2021		
ANGLE PROJECTION: FIRST		DO NOT SCALE DRAWING		Description: IP67 Push-Pull-Gehäuse EMV kpl Zinkdruckguß, YAMAICHI Logo			
		ID	DATE	Purchase No.: Y-CONCOVER-40-PP-Y			
		CREATED	M161	21.01.2021	Drawing No.: Customer-P3021A33		
		MODIFIED	M161	09.06.2021		REVISION: 002	
		RELEASED	M189	10.06.2021			
WEIGHT:		SUBREV02	M161	26.10.2021	SCALE: 1:1	SHEET 1 OF 4	DIN A3 - ASSEMBLY

