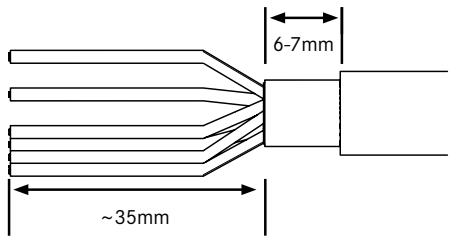
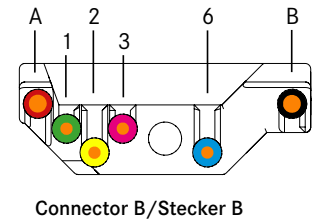
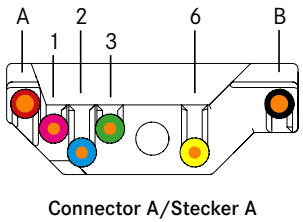
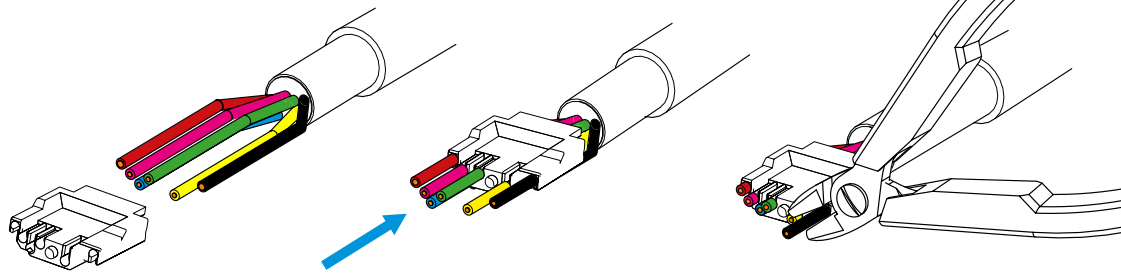


# Y-Contool-11 Assembly Instruction

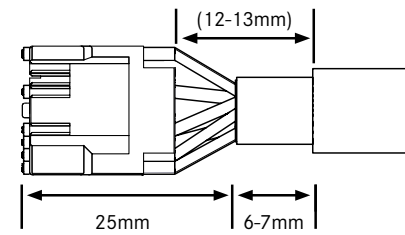
**01** Strip the cable to the appropriate length  
*Kabel auf passende Länge abisolieren*



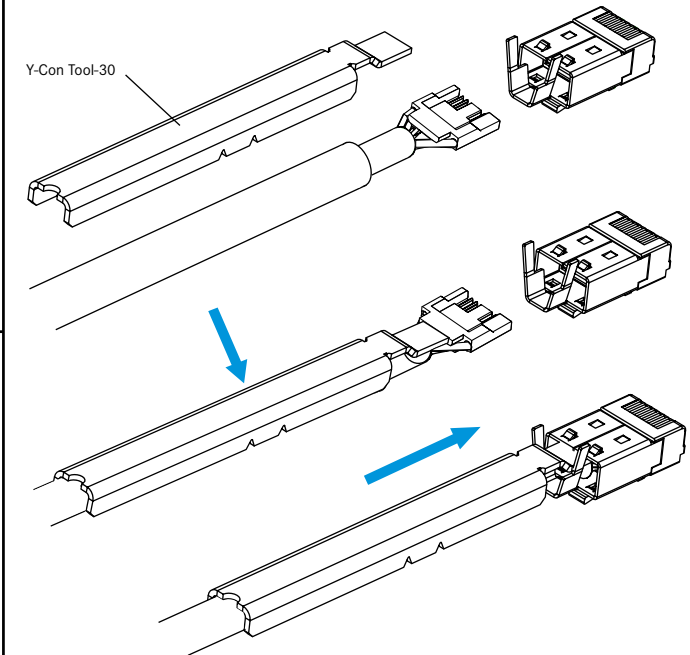
**02** Thread single wires into the insert as shown  
*Einzellitzen, wie abgebildet, in Insert einfädeln*



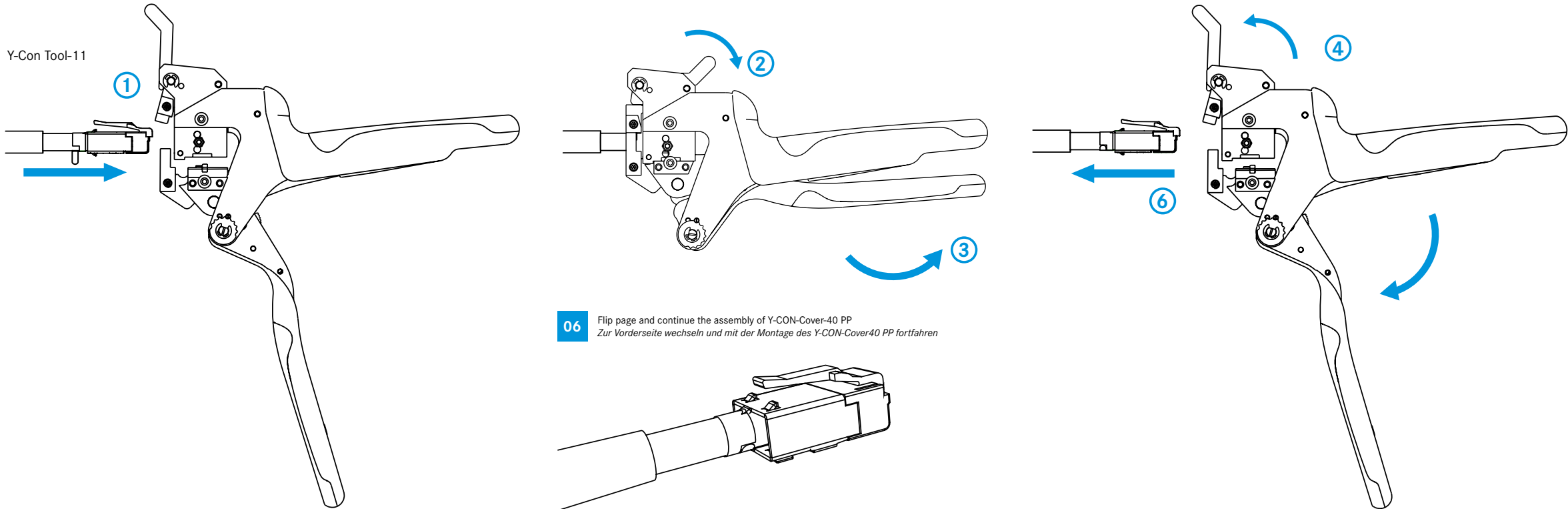
**03** Cable cut to final length  
*Kabel auf finale Länge abgeschnitten*



**04** Insert the prepared cable into the plug using the Y-Con Tool-30 until it stops  
*Vorbereitetes Kabel mit Hilfe des Y-Con Tool-30 bis zum Anschlag in den Plug einführen*



**05** Crimp the plug with the crimping tool as shown  
*Steckverbinder mittels Crimpzange, wie abgebildet, mit dem Kabel vercrimpen*



**06** Flip page and continue the assembly of Y-CON-Cover-40 PP  
*Zur Vorderseite wechseln und mit der Montage des Y-CON-Cover40 PP fortfahren*

